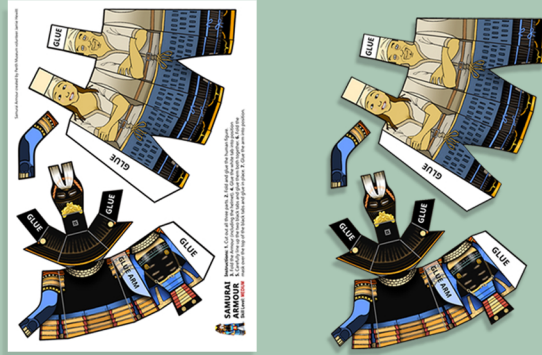




# MAKE YOUR OWN SAMURAI WARRIOR

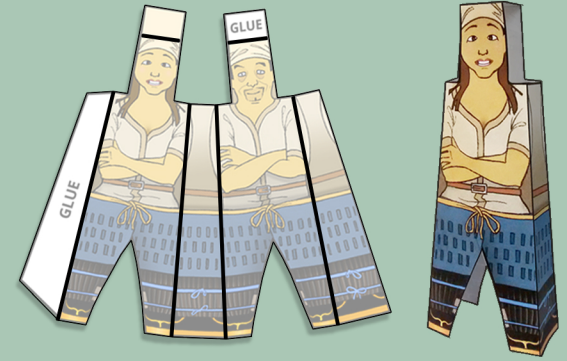
**INSTRUCTIONS**

1



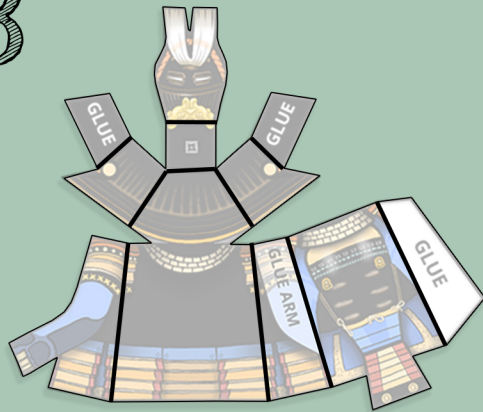
Cut out parts.

2

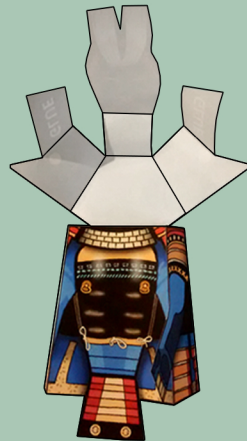


Fold along these lines and  
glue the figure together.

3



Fold along these lines.



Glue the white tab  
so that your model  
now looks like this.



Line up the black  
tabs and glue  
them together.



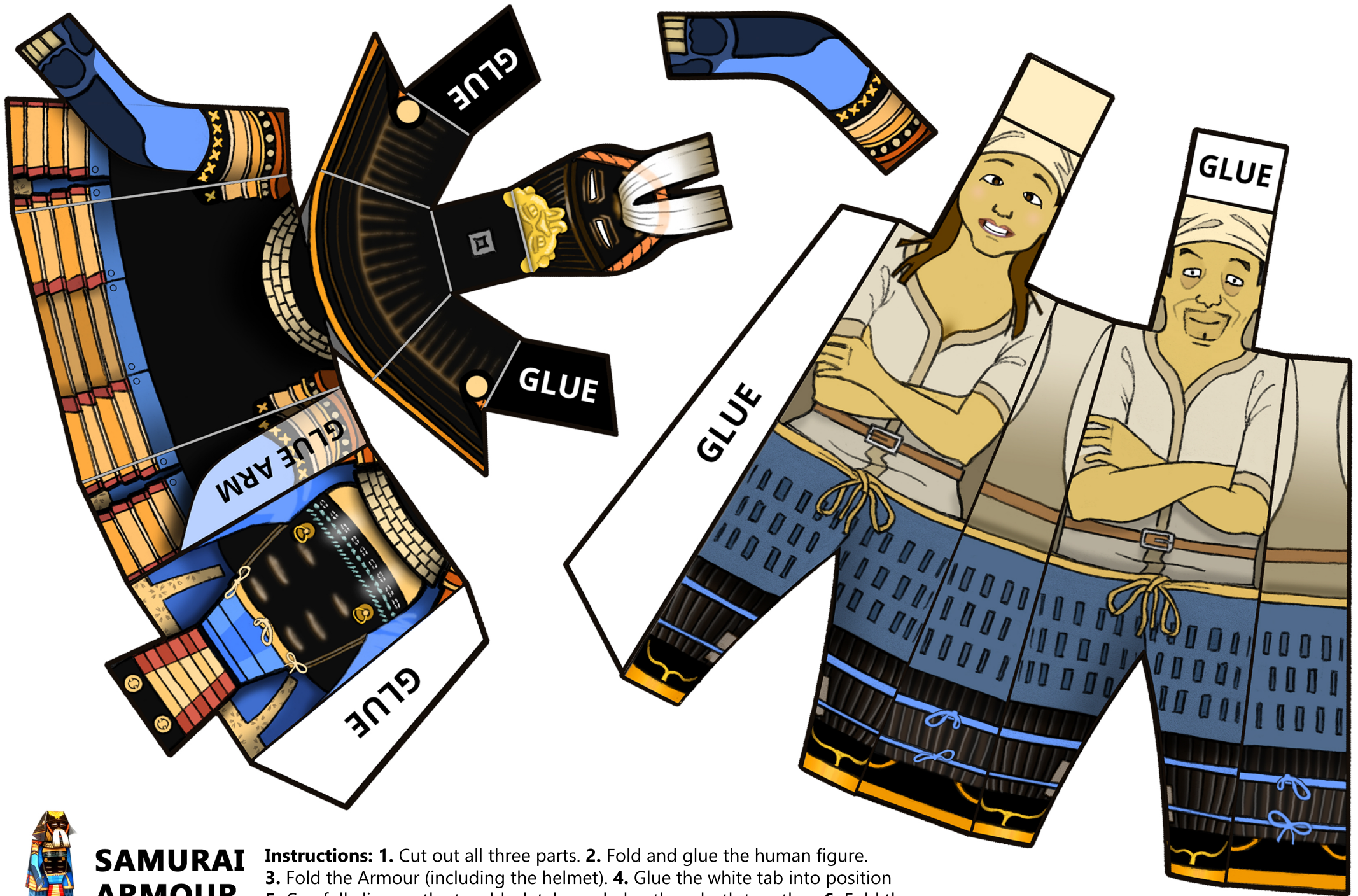
Fold the face  
mask over and  
glue in place.



Your model  
should now  
look like this.



Glue on the arm.



## SAMURAI ARMOUR

Skill Level: **MEDIUM**

**Instructions:** 1. Cut out all three parts. 2. Fold and glue the human figure. 3. Fold the Armour (including the helmet). 4. Glue the white tab into position. 5. Carefully line up the two black tabs and glue them both together. 6. Fold the mask over the top of the black tabs and glue in place. 7. Glue the arm into position.