

Identifying Booklice

in Scottish Galleries, Libraries, Archives & Museums



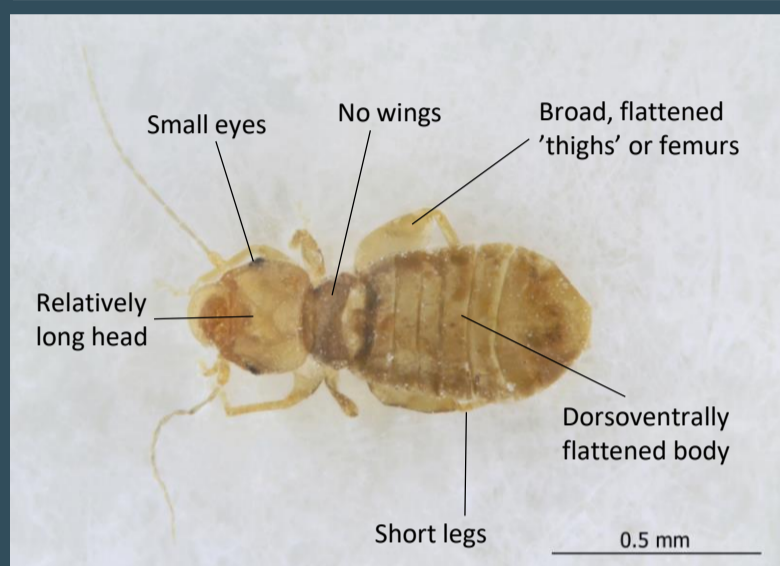
Jeanne Robinson¹, Joseph C. Jackson² & Ashleigh L. Whiffin²

Booklice (Psocids) are all too frequently encountered in GLAM, but identification to species level can often be overlooked, after all there's no such thing as a good booklouse when it comes to collections care, so why bother?

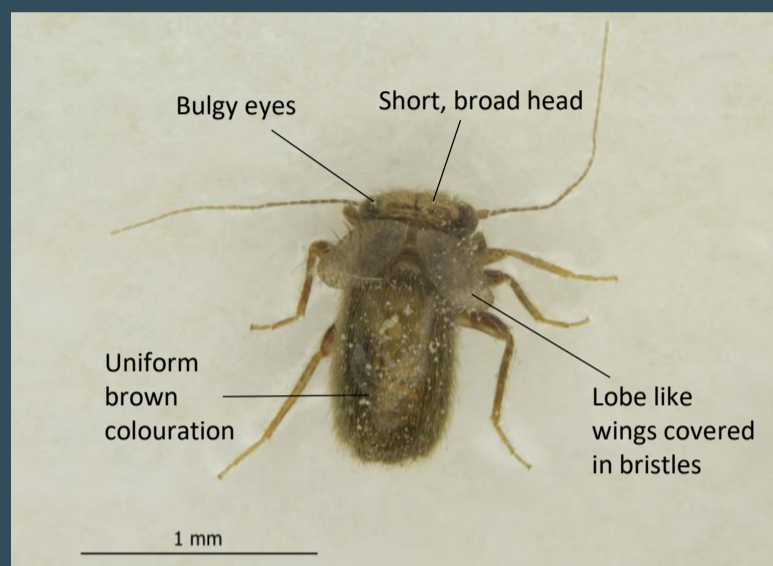
Booklice can provide an indicator that IPM is failing in a particular area. By monitoring any booklice on your blunder traps and identifying the specific species present on your site, you will be able to recognise any new invasions, and respond accordingly.

This simple identification aid is here to help you recognise the **5 species** currently known from Scotland.

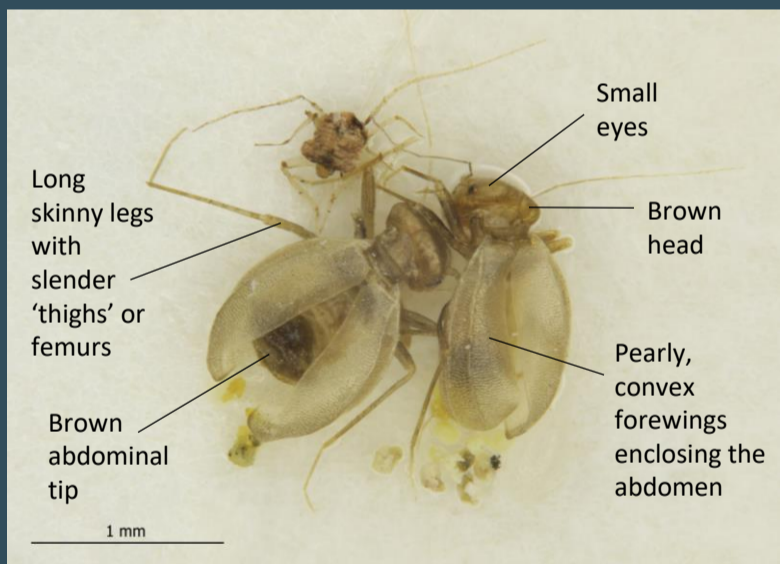
Liposcelis bostrycophila



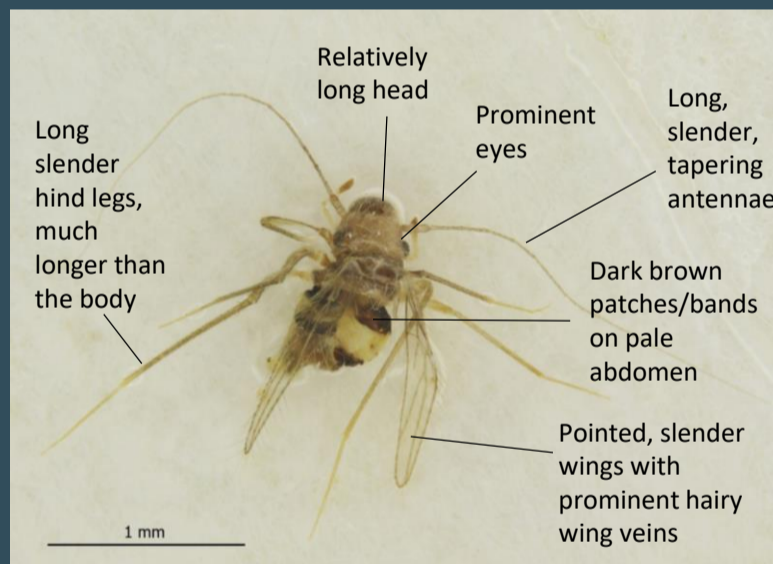
Lepinotus reticulatus



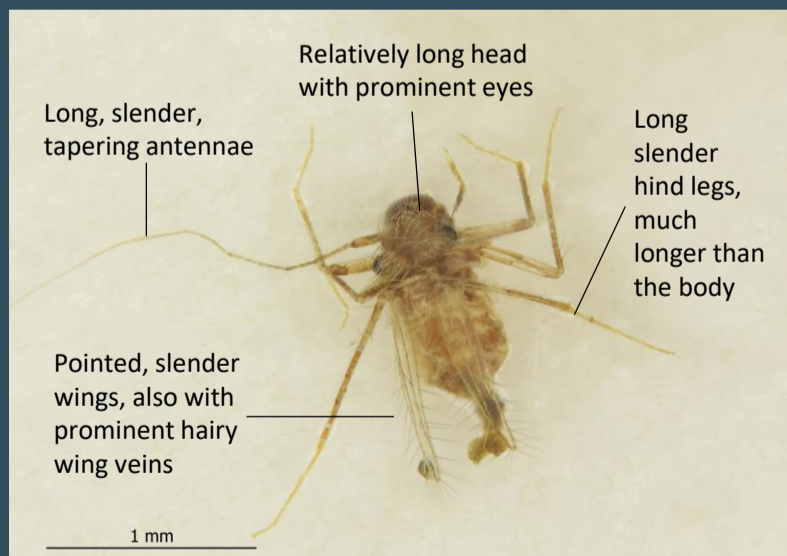
Badonnelia titei



Dorypteryx domestica

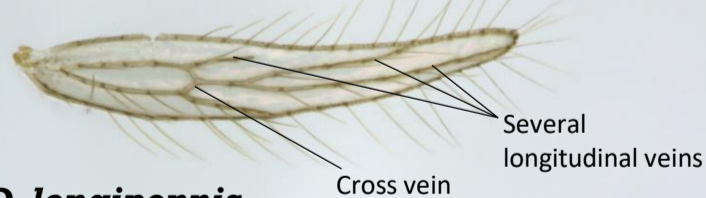


Dorypteryx longipennis

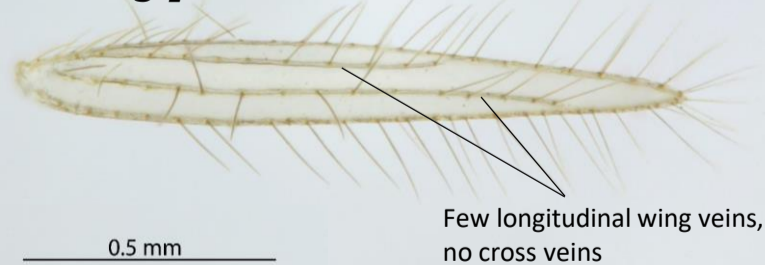


The wings are the key to separating the 2 species of *Dorypteryx*...

D. domestica



D. longipennis



RECORDING YOUR BOOKLICE:

If you need further assistance identifying your booklice, we'd be happy to take a look at your sticky traps – just get in touch!

To help map the distribution of these species we strongly encourage you to submit your booklice records of via the 'What's Eating Your Collection' website.

<https://www.whateatingyourcollection.com/>

jeanne.robinson@glasgow.ac.uk

